

propulsion

TWIN VOLVO PENTA D11-725
(T-725 HP - 533 KW)

cruising speed* 25 KNOTS

maximum speed* 30 KNOTS

length overall 58' 1" / 17.7 M

hull length 52' 0" / 15.85 M

beam 15' 7" / 4.8 M

dry weight 53,462, LB / 24,250 KG

maximum load weight 63,383 LB / 28,750 KG

draft (maximum) 4' 6" / 1.4 M

height (including mast light) 17' 1" / 5.2 M

fuel capacity 581 GAL / 2,200 L

water capacity 185 GAL / 700 L

black water capacity 53 GAL / 200 L

The specification measurements are approximate and subject to variance.

*The listed performance data is an estimate only based on vessel testing on fresh water with 6 people, full fuel and water and a clean hull bottom. The performance will change based on boating location, vessel loading and maintenance.



Scenic views abound through large sweeping windows throughout the salon, forward helm, and gourmet galley.

Note: Layout and features may vary from shown here due to manufacturer consideration and client customization.

The master stateroom offers sumptuous space to enjoy private time in ultimate comfort. Enjoy morning coffee with a view on the en-suite settee.



Powerful and graceful, the Galeon 570 SKY performs with solid poise that creates a spirit of confidence and assurance from either helm. Bring the outdoors inside with the opening sunroof and windows.



The Galeon 570 SKY is a magnificent example of Old-World craftsmanship coming together with innovative design and today's technologies. Every detail is forged to impress even the most demanding aficionado. Warm, rich woods, large, sweeping windows and supple materials combine to form impeccable accommodations to spend special times with family and friends or to entertain business associates in grand style.



STANDARD FEATURES

EXTERIOR

Exterior Upholstery

- Tan & Mocha
- OR
- White & Mocha
- OR
- White & Silver

Hull & Deck Accessories

Bottom paint
 Bow deck rail, 316 stainless steel with side access
 Cleats, 16" stainless steel (8)
 Fiberglass engine room air intakes and stainless steel outputs
 Flooring, molded non-skid (bow and side deck)
 Handrails, 316 stainless steel (cockpit and side deck)
 Horn, electric
 Lights, navigation
 Mooring System

- Electric anchor winch with helm station and foot switches
- Anchor roller
- Galvanized anchor, 77 LB/35 KG with 295 FT/90 M of 3/8" (10 mm) galvanized chain
- Fiberglass deck hatch to self-draining chain locker

 Rubrail, PVC with stainless steel insert
 Spotlight, remote-controlled
 Skylight, foredeck with opening rectangular hatch
 Sunpad, foredeck

- Cupholders, plexiglass
- Handrails, stainless steel
- Mattresses, with convertible backrests

 Thru-hull fittings, stainless steel
 Windows, bonded tempered glass (hullside) with integrated opening portholes
 Windshield, bonded tempered and tinted glass
 Windshield defroster

Cockpit

Door, salon entrance – three segment, stainless steel and glass, folding and lockable with flush threshold
 Handrails, 316 stainless steel
 Lighting, indirect LED (cockpit and stairs)
 Lighting, overhead LED

Self-draining
 Sofa, L-shaped upholstered
 Speakers (2)
 Stairs, access to skydeck (molded fiberglass with teak treads and stainless steel handrail)
 Stairs, access to walkaround (molded, port, and starboard)
 Storage, side lockers
 Teak, cockpit sole

Stern

Cleats, 11" stainless steel (2)
 Door, cockpit access (fiberglass)
 Lighting, indirect LED
 Shore power inlet, 240V
 Shower, fresh water (hot and cold)
 Stairs, access to cockpit (molded, port)
 Storage, aft deck lazarette with transom entrance and engine room access
 Storage, side lockers
 Swim platform, extended with collapsible three-step stainless steel swim ladder and teak decking

Skydeck

Electric carbon fiber cover
 Flooring, molded non-skid
 Handrails, 316 stainless steel
 Helm station

- Compass
- Cupholder
- Foldable steering console with collapsible plexiglass windscreen
- Helm seat, single, rotating with armrest and folding backrest
- Outlets, USB
- Station instruments and controls
 - 7" Volvo Electronic Vessel Control (EVC) panel
 - Switches
 - Fire system monitor
 - Engine ignition panel
 - Trim tab control panel
 - Dual lever control, EVC
- Steering wheel, exclusive Galeon
- Stereo, Fusion 12V AM/FM with bluetooth module and speakers (2)

 Fiberglass arch with foldable, stainless steel radar mast and Blue accent LED lighting

Hatch, skydeck access (foldable plexiglass)
 Light, anchor
 Lighting, indirect LED
 Outlet, 120V GFI protected
 Seating, L-shape upholstered sofa with sunpad conversion and storage below
 Seating, single adjacent (starboard) to helm with convertible backrest
 Seating, single adjacent (port) to helm
 Storage, console glovebox (2)
 Storage, cupboard

INTERIOR

Interior Color & Materials

Cabinetry

- Dark Walnut Matte
- OR
- Beachwood Matte

 Window Treatments

- Roman shades

 Interior Color Scheme

- White
- OR
- Beige

Salon

Carbon monoxide detector
 Flooring, carpet
 Corridor stairs, carpeted with indirect LED spot lights
 Helm station (main)

- A/C vents
- Compass
- Cupholders
- Helm seat, rotating doublewide with wood footrest
- Outlets, USB
- Station instruments and controls
 - Volvo 7" digital Electronic Vessel Control (EVC) panel
 - Switches
 - Fire system monitor
 - Engine start panel with electronic key fobs
 - Trim tab control panel
 - Dual lever control, EVC
 - Rudder indicator
 - Alarm, high water – bilge (2), cabin

- Steering wheel, exclusive Galeon
- Synchronized twin windscreen wipers with front window washing system and defroster outlets

Lighting, overhead LED
 Outlets, 120V
 Seating, C-shape sofa with hi-lo wood dining table and filler cushion
 Seating, opposing sofa
 Side window, panoramic electrically opening (port and starboard)
 Speakers (2)
 Storage, wall cabinets
 Sunroof, electric opening carbon fiber with tinted glass

Galley (aft)

Cooktop, 240V two-burner induction
 Corian worktop with shelf
 Extractor fan, overhead
 Hatch, engine room access
 Lighting, accent LED
 Lighting, overhead LED
 Microwave, 120V
 Outlets, 120V GFI protected
 Refrigerator, 240V upright with freezer compartment (5.8 ft³/165 L)
 Refrigerator, 240V drawer (2.3 ft³/65 L)
 Storage, cabinets and overhead cupboards
 Sink, twin stainless steel with faucet and wood cutting board
 Waterproof wood look floor

Lower Corridor

Flooring, carpet
 Lower accommodation stairs, carpeted with indirect LED spot lights
 Door, access to guest head and shower with full length mirror

Master Cabin (full beam, amidship)

Carbon monoxide detector
 Door, private access to owner's head and shower with full length mirror
 Bed, queen-size, centerline with polyurethane high resilience foam mattress, bed cover and storage below
 Dressers, starboard side
 Flooring, carpet



STANDARD FEATURES

Headboard, decorative with adjacent reading lamps
 Lighting, accent LED
 Lighting, overhead LED with wood detailing
 Nightstands with storage (port and starboard)
 Outlets, 120V (port and starboard at nightstand)
 Portholes, opening tinted inserts in main windows (port and starboard) with mosquito nets
 Sofa, port side with vanity table, shelves, and storage below
 Storage, cabinet (entry hallway)
 Wardrobe with lighted stainless steel rod

Master Head & Shower

A/C vent
 Bathroom accessories – toothbrush holder, towel hooks, soap dispenser, toilet paper holder
 Corian countertop with ceramic bowl and chrome faucet
 Extractor fan
 Flooring, molded fiberglass non-slip
 Lighting, overhead LED
 Mirror
 Outlet, 120V GFI protected
 Porthole, opening tinted with mosquito net
 Storage, cabinets and shelving
 Toilet with electric pump and macerator
 Separate shower area with hinged plexiglass door

- Corian panel
- Chrome shower system with overhead rain shower
- Floor drain
- Porthole, opening tinted with mosquito net
- Storage, cabinet

Bow Guest Cabin

Carbon monoxide detector
 Door, private access to guest head and shower with full length mirror
 Berth, queen-size with polyurethane high resilience foam mattress, bed cover and drawer storage below
 Flooring, carpet
 Headboard, mirrored with adjacent reading lamps
 Lighting, accent LED
 Lighting, overhead LED
 Outlets, 120V (port and starboard, adjacent to bed)

Portholes, opening tinted inserts in main windows
 Skylight, foredeck with opening rectangular hatch
 Storage, bow cabinets
 Storage, overhead cabinets (port and starboard) with storage below
 Vanity, storage cabinet below
 Wardrobe with lighted stainless steel rod and cabinets below

Guest Head & Shower

A/C vent
 Bathroom accessories – toothbrush holder, towel hooks, soap dispenser, toilet paper holder
 Cabinets, mirrored
 Corian countertop with ceramic bowl and chrome faucet
 Extractor fan
 Flooring, molded fiberglass non-slip
 Lighting, overhead LED
 Outlet, 120V GFI protected
 Porthole, opening tinted with mosquito net
 Storage, cabinet
 Toilet with electric pump and macerator
 Separate shower area with hinged plexiglass door

- Cabinet, mirrored
- Corian panel
- Chrome shower system with overhead rain shower
- Porthole, opening tinted with mosquito net
- Seat, Corian

Side Guest Cabin

Carbon monoxide detector
 Bunks, convertible twin with polyurethane high resilience foam mattress, bed covers, and storage below (beds slide to form double bed)
 Flooring, carpet
 Lighting, accent LED
 Lighting, overhead LED
 Outlets, 120V
 Nightstand with storage drawer
 Porthole, opening tinted insert in main window with mosquito net
 Reading lamps
 Storage, overhead cabinets
 Wardrobes with lighted stainless steel rod and cabinets below

SYSTEMS

Power & Drive Systems

Volvo Penta 2x D11-725 (2x 725 HP/533 kW)
 diesel engines

- Straight shaft transmission
- Propellers and rudder (bronze)
- Propeller shafts (stainless steel)
- Electronic Vessel Control System
- Exhaust, wet

Hydraulic steering system
 Trim tabs, hydraulic with indicators

Bilge

Automatic/manual fire extinguishing system
 Bilge pumps, automatic electric (3)
 Bilge pumps, high water alarm
 Common drain system
 Extractor fans (2)
 Lighting, LED
 Sound insulation

Air Conditioning

Air Conditioning System, Condaria Chilled water (84,000 BTU) – 240V

Electrical Systems

DC Electrical System (24V)

- Batteries
- Battery charger/converter
- Circuit breakers
- Integrated Management Information System (IMIS), Raymarine

 AC Electrical System (240V)

- Shore power, 240V/50A
- Circuit breakers
- Generator, Onan 17.5 kW diesel with sound shield (240V)
- Zincs

Fuel System

Fuel tanks (2), 316 stainless steel with air releases
 Fuel filters, (2) engines, (1) generator
 Fuel lines, USCG – Type A-1
 Fuel inlet, port and starboard aft deck
 Fuel stop valve, electromagnetic
 Fuel transfer system, manual valve

Fresh Water System

Water tanks (2), stainless steel with air releases
 Water inlets (2), one for each tank, stainless steel (starboard forward and aft deck)
 Water pump, 24V with filter
 Water heater, 21 GAL/80 L
 Dockside/shore water connection
 Level indicator

Waste System

Black Water Waste System

- Water tank, stainless steel with odor filter, water level sensor, and air release
- Waste pump, electric
- Level indicator
- Dockside pumpout fitting – stainless steel (starboard aft deck)
- Overboard waste discharge fitting

OTHER ITEMS

Owner's manual and engine manual



FACTORY OPTIONS

Color & Materials

Cabinetry

- Gloss Walnut
- OR
- Gloss Eucalyptus

Interior Upholstery

- White (Walnut Cabinetry)
- OR
- White and Grey (Beachwood Grey Cabinetry)

Window Treatments

- Wooden shutters

Shower Tile Mosaic

- Master shower
- Guest shower

Head Floor Tile

- Master head
- Guest head

Comfort Pack

Curtain, salon entrance door

Windshield shades, front and side

Trip computer

Bow thruster, electric

Cablemaster, glendenning

Raymarine Chartplotter/FF (main helm station)
and auxilliary Axiom Chartplotter (upper
helm station)

- Raymarine Sonar transducer
- Raymarine Digital 4.0 kW Radome Radar

Raymarine VHF Ray91 AIS receiver, remote
speaker, repeater, and antenna

Raymarine autopilot with control units at main and
skydeck helm stations

Electric sliding TV LED SMART 48" with Blu-ray
player in salon - Samsung

TV LED SMART 32" with Blu-ray player in master
cabin - Samsung

Luxury Pack

Hydraulic swim platform with connecting
stairway and chocks

Underwater LED lights (2)

Refrigerator, skydeck

Table, foldable fiberglass, cockpit

Waterproof wood look floor in salon

Flooring, carpet runners over salon floor

Electric toilet and single berth in crew cabin

Safe, master stateroom

Washer and dryer, combo

Stern thruster, electric

Additional Raymarine Axiom Chartplotter
(main helm station)

TV LED SMART 24" with Blu-ray player in
bow guest cabin

Home Theatre System, Bose® soundbar and
Acoustimass® module

Audio system Fusion on bow, speakers (2)

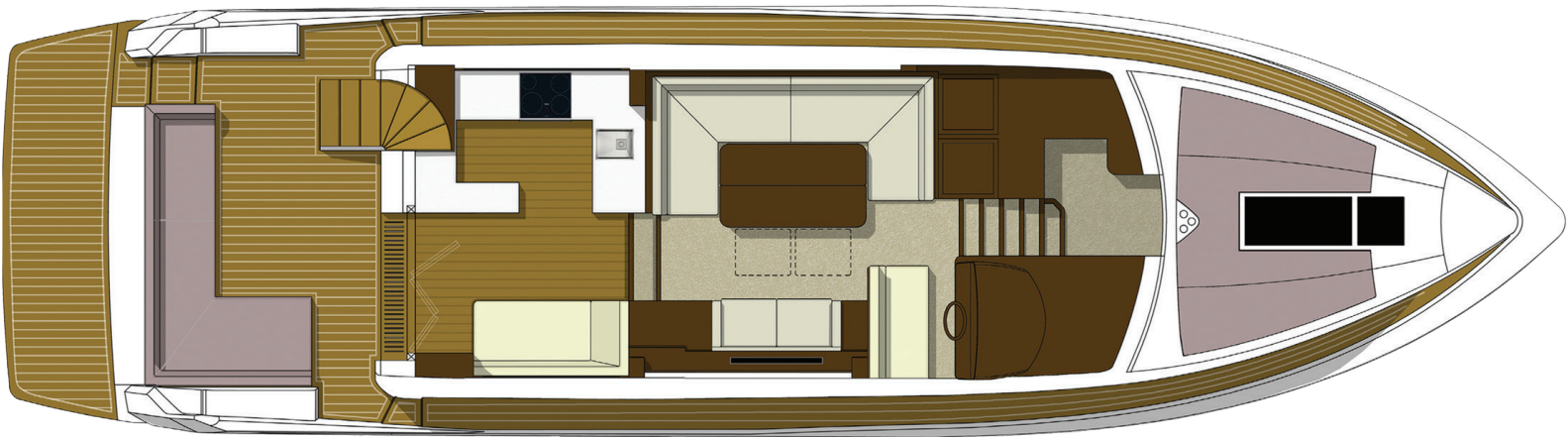
Pre-wired for audio/video in third cabin

Individual Options

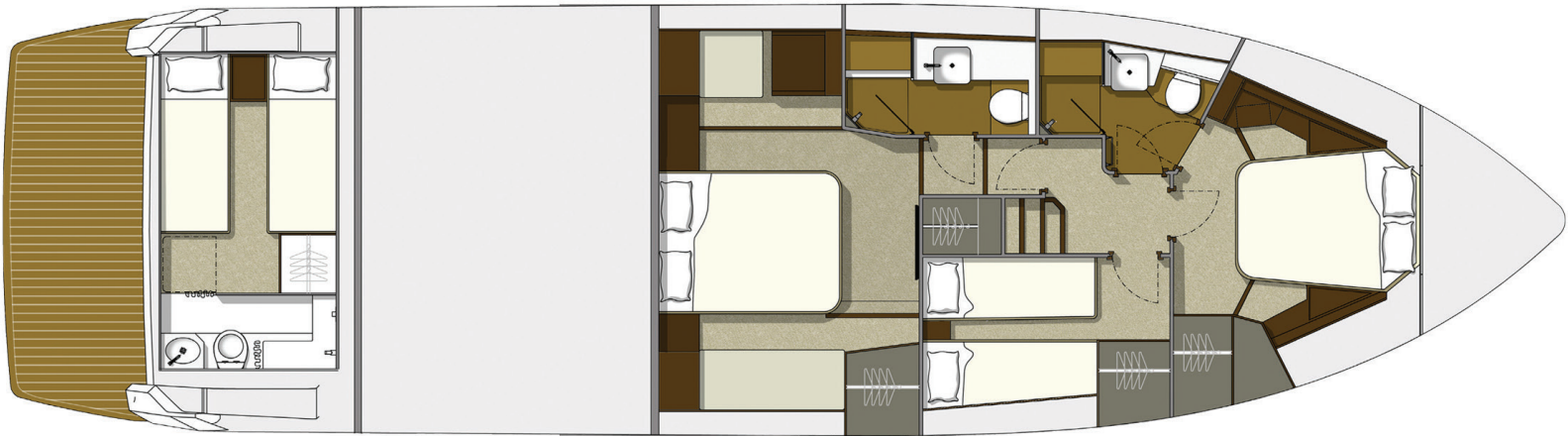
Gyro stabilizer (1x Seakeeper 9)



LAYOUT



COCKPIT/MAIN DECK



BELOW DECK (shown with optional crew cabin)

The right is reserved to make changes, without notice, at any time, in equipment, materials, and specifications. Drawings, photos, and renderings may show optional equipment.



