

640

***propulsion***

TWIN VOLVO PENTA D13-1000  
(T-1000 HP - 745 KW)

*cruising speed\** 25 KNOTS

*maximum speed\** 29 KNOTS

*length overall* 68' 3" / 20.8 M

*hull length* 60' 5" / 18.42 M

*beam* 16' 5" / 5.0 M

*beam (balcony down)* 24' 3" / 8.1 M

*dry weight* 78,264 LB / 35,500 KG

*maximum load weight* 90,389 LB / 41,000 KG

*draft (maximum)* 4' 10" / 1.47 M

*height (including mast light)* 24' 9" / 7.54 M

*fuel capacity* 990 GAL / 3,750 L

*water capacity* 211 GAL / 800 L

*black water capacity* 55 GAL / 210 L

*The specification measurements are approximate and subject to variance.*

*\*The listed performance data is an estimate only based on vessel testing on fresh water with 6 people, full fuel and water and a clean hull bottom. The performance will change based on boating location, vessel loading and maintenance.*





*The main-deck layout is such that the galley, dining settee, and helm all have open lines of communication, making for a convivial environment.*

**Note:** Layout and features may vary from shown here due to manufacturer consideration and client customization.

*Galeon is known for its innovations, such as this window that offers inventive access to the foredeck lounge.*



*The accommodations level on the 650 competes with much larger yachts in terms of spaciousness and luxurious appointments.*



The 650 SKY is the pinnacle of design and technical prowess. Be transcended and transformed as the 650 SKY leaves you breathless as her volume belies her physical dimensions and every turn offers a game changing innovation. The carbon fiber Skydeck roof panels eloquently disappear to reveal a large bridge while the available tender garage and rotating cockpit seat provide for endless vistas and truly unique experiences onboard. With the proportions of larger yachts designed carefully into an amazing package.



# STANDARD FEATURES

## EXTERIOR

### Exterior Upholstery

- Tan & Mocha
- OR
- White & Mocha
- OR
- White & Silver

### Hull & Deck Accessories

Bottom paint  
 Bow deck rail, 316 stainless steel with side access  
 Cleats, 16" stainless steel (8)  
 Fiberglass engine room air intakes and stainless steel outputs  
 Flooring, molded non-skid (bow and side deck)  
 Fusion radio RA205 with speakers (2) on bow  
 Handrails, 316 stainless steel (cockpit and side deck)  
 Horn, electric  
 Lights, navigation  
 Mooring System
 

- Electric anchor winch with helm station and foot switches
- Anchor roller
- Galvanized anchor with galvanized chain
- Lockable, fiberglass deck hatch to self-draining chain locker

 Rubrail, PVC with stainless steel insert  
 Ship's bell  
 Spotlight, remote-controlled  
 Skylight, foredeck with opening rectangular hatch  
 Seating, foredeck  
 Sunpad, foredeck  
 Tables cockpit, foredeck  
 Thru-hull fittings, stainless steel  
 Windows, bonded tempered glass (hullside) with integrated polycarbonate opening portholes  
 Windshield, bonded tempered and tinted glass  
 Windshield defroster

### Cockpit

Door, salon entrance – three segment, stainless steel and glass, folding and lockable with flush threshold  
 Handrails, 316 stainless steel  
 Hatch, engine room access  
 Lighting, indirect LED (cockpit and stairs)

Lighting, overhead LED  
 Self-draining  
 Sofa, C-shaped upholstered with aft sunpad  
 Cupholders  
 Speakers (2)  
 Stairs, access to skydeck (molded fiberglass with teak treads and stainless steel handrail)  
 Storage, side lockers  
 Table  
 Teak, cockpit sole

### Stern

Cleats, stainless steel (2)  
 Crew cabin
 

- A/C
- Bed, two singles
- Door, transom with stairs
- Lighting, overhead LED
- Outlet, 120V
- Portlight
- Storage, cabinetry
- Wardrobe with stainless steel rod and shelving
- Crew head
- Shower
- Sink with faucet
- Toilet with electric pump and macerator

 Door, cockpit access (stainless steel and acrylic)  
 Lighting, indirect LED  
 Shore power inlets, 240V  
 Shower, fresh water (hot and cold)  
 Stairs, access to cockpit (molded, port and starboard)  
 Storage, side lockers  
 Swim platform, hydraulic with connecting stairway, adjustable chocks, collapsible three-step stainless steel swim ladder, and teak decking

### Skydeck

Flooring, molded non-skid  
 Self-draining  
 Handrails, 316 stainless steel  
 Helm station
 

- Compass
- Cupholders
- Helm seat, doublewide
- Outlets, USB
- Station instruments and controls

- Engine data display  
 - Switches  
 - Thruster control panel  
 - Fire system monitor  
 - Engine ignition panel  
 - Trim tab control panel  
 - Dual lever control, EVC  
 • Steering wheel, exclusive Galeon  
 • Stereo, Fusion 12V AM/FM with bluetooth module and speakers (2)  
 Fiberglass arch with stainless steel radar mast  
 Hatch, skydeck access  
 Light, anchor  
 Lighting, indirect LED  
 Outlet, 120V GFI protected  
 Seating, U-shape upholstered  
 Table, fiberglass

## INTERIOR

### Interior Color & Materials

Cabinetry
 

- Dark Walnut Matte
- OR
- Beachwood Matte

 Interior Upholstery
 

- White
- OR
- Beige

 Window Treatments
 

- Roman shades

### Salon/Dinette

Carbon monoxide detector  
 Flooring, carpet  
 Corridor stairs, dual with indirect LED spot lights  
 Blinds, salon entrance door  
 Lighting, overhead LED with wood detailing  
 Outlet, 120V  
 Seating, C-shape sofa with hi-lo wood table with storage below  
 Side windows, panoramic with window treatments  
 Storage, cabinets  
 Wetbar, sink and storage forward  
 Bow access through windshield

### Galley

Cooktop, 240V two-burner induction  
 Corian worktop with Corian shelf  
 Extractor fan, overhead  
 Lighting, accent LED  
 Lighting, overhead LED with wood detailing  
 Microwave  
 Outlet, 120V GFI protected  
 Refrigerator, under counter with freezer compartment (5.8 ft³/165 L)  
 Side windows, panoramic with window treatments  
 Storage, cabinets and overhead cupboards  
 Storage, dedicated glass storage  
 Twin stainless steel sinks with faucet and wood cutting board  
 Breakfast bar, starboard  
 Waterproof wood look floor

### Helm Station (main, lower)

A/C vents  
 Compass  
 Cupholders  
 Outlets, USB  
 Station instruments and controls
 

- Engine data display
- Switches
- Thruster control panel
- Fire system monitor
- Engine start panel
- Trim tab control panel
- Dual lever control, EVC
- Rudder indicator
- Alarm, high water – bilge (2), cabin

 Seat, dual captain's seats with armrests  
 Steering wheel, exclusive Galeon  
 Synchronized twin windscreen wipers with front window washing system and defroster outlets

### Master Cabin (full beam, amidship)

Carbon monoxide detector  
 Door, private access to owner's head and shower with full length mirror  
 Bed, queen-size, centerline with polyurethane high resilience foam mattress, bed cover and storage below  
 Flooring, carpet





## STANDARD FEATURES

Headboard, decorative with adjacent reading lamps  
 Lighting, accent LED  
 Lighting, overhead LED  
 Lighting, skylight LED  
 Nightstands with storage, port and starboard  
 Outlets, 120V  
 Side windows, panoramic with window treatments  
 Seating, port side twin seat with storage between  
 Sound system, Bose® SoundTouch® 120 with soundbar and Acoustimass® module  
 Storage, cabinet  
 TV LED 32" with Blu-ray player  
 Vanity with stool  
 Wardrobe, port and starboard

### Master Head & Shower

A/C vent  
 Bathroom accessories – toothbrush holder, towel hooks, soap dispenser, toilet paper holder  
 Cabinets, mirrored  
 Corian countertop with ceramic bowl and chrome faucet  
 Extractor fan  
 Flooring, molded fiberglass non-slip  
 Lighting, overhead LED  
 Outlet, 120V GFI protected  
 Porthole, opening tinted with mosquito net  
 Storage, cabinets and shelving  
 Toilet with electric pump and macerator  
 Separate shower area with hinged plexiglass door
 

- Corian panel
- Chrome shower system with overhead rain shower
- Floor drain
- Shower tile mosaic

### Forward Guest Cabin

Carbon monoxide detector  
 Door, private access to guest head and shower with full length mirror  
 Bed, queen-size, centerline with polyurethane high resilience foam mattress, bed cover and drawer storage below  
 Flooring, carpet  
 Headboard, decorative with adjacent reading lamps  
 Lighting, accent LED

Lighting, overhead LED  
 Outlets, 120V  
 Portholes, opening tinted inserts in main windows (port and starboard) with mosquito nets  
 Side windows with window treatments  
 Skylight, foredeck with opening rectangular hatch and manual blinds  
 Storage, overhead and adjacent cabinets (port and starboard)  
 Stairs, private entrance  
 Vanity with stool  
 Wardrobe with lighted stainless steel rod

### Forward Head & Shower

A/C vent  
 Bathroom accessories – toothbrush holder, towel hooks, soap dispenser, toilet paper holder  
 Cabinet, mirrored  
 Corian countertop with ceramic bowl and chrome faucet  
 Extractor fan  
 Flooring, molded fiberglass non-slip  
 Lighting, overhead LED  
 Outlet, 120V GFI protected  
 Porthole, opening tinted with mosquito net  
 Storage, cabinet  
 Toilet with electric pump and macerator  
 Separate shower area with hinged plexiglass door
 

- Corian panel
- Chrome shower system with overhead rain shower
- Floor drain
- Shower tile mosaic

### Mid Guest Cabin (3-cabin layout)

Carbon monoxide detector  
 Beds, convertible twin with polyurethane high resilience foam mattress, bed covers, and storage below (filler to form double bed)  
 Flooring, carpet  
 Lighting, overhead LED  
 Lighting, reading lamps (2)  
 Outlet, 120V  
 Nightstand with storage drawer  
 Porthole, opening tinted insert in main window with mosquito net  
 Side windows with window treatments  
 Storage, overhead cabinets  
 Wardrobes with lighted stainless steel rod

### Port & Starboard Guest Stateroom (4-cabin layout)

Carbon monoxide detector  
 Bed, twin, with polyurethane high resilience foam mattress, bed cover and storage below  
 Flooring, carpet  
 Lighting, overhead LED  
 Nightstand with storage drawer and reading lamp  
 Outlet, 120V  
 Porthole, opening tinted inserts in main window with mosquito nets  
 Side windows with window treatments  
 Storage, overhead cabinets  
 Wardrobe with lighted stainless steel rod

### Guest Head & Shower

A/C vent  
 Bathroom accessories – toothbrush holder, towel hooks, soap dispenser, toilet paper holder  
 Cabinets, mirrored  
 Corian countertop with ceramic bowl and chrome faucet  
 Extractor fan  
 Flooring, molded fiberglass non-slip  
 Lighting, overhead LED  
 Outlet, 120V GFI protected  
 Porthole, opening tinted with mosquito net  
 Storage, cabinet  
 Toilet with electric pump and macerator  
 Separate shower area with hinged plexiglass door
 

- Cabinet, mirrored
- Corian panel
- Chrome shower system
- Floor drain

### Crew Cabin

Beds, (2) twin  
 Refrigerator  
 Microwave  
 Storage  
 Head with shower and sink  
 Engine room access  
 Lighting, LED  
 Window for natural light

## SYSTEMS

### Power & Drive Systems

2x Volvo Penta D13-1000 (2x 1000 HP/745 kW) diesel engines
 

- Straight shaft transmission
- Propellers and rudder (bronze)
- Propeller shafts (stainless steel)
- Electronic Vessel Control System
- Exhaust, underwater

 Bow thruster, electric  
 Hydraulic steering system  
 Trim tabs interceptors with indicators

### Bilge

Automatic/manual fire extinguishing system  
 Bilge pumps, automatic electric (3)  
 Bilge pumps, high water alarm  
 Common drain system  
 Extractor fans (2)  
 Ladder, stainless steel  
 Lighting, LED  
 Sound insulation

### Air Conditioning

Air Conditioning System, Condaria Chilled water (108,000 BTU) – 240V

### Electrical Systems

DC Electrical System (24V)
 

- Batteries, engine starting
- Batteries, service
- Battery, bow thruster
- Battery charger/converter, 120V/12V
- Circuit breakers
- Integrated Management Information System (IMIS), Raymarine
- Digital switching system, EmpireBus

 AC Electrical System (240V)
 

- Shore power, dual 240V/50A
- Circuit breakers
- AC main control panel
- Generator, Onan 29 kW diesel with sound shield (120/240V)
- Zincs





## STANDARD FEATURES

### Electronics

Raymarine VHF radio with Automatic Identification System (AIS) receiver, remote speaker, repeater, and antenna  
 Raymarine Autopilot with control units at main and skydeck helm stations

### Fuel System

Fuel tanks (2), 316 stainless steel with air releases  
 Fuel filters, (2) engines, (1) generator  
 Fuel lines, USCG – Type A-1  
 Fuel inlet, port and starboard aft deck  
 Fuel stop valve, electromagnetic  
 Fuel transfer system, manual valve

### Fresh Water System

Water tank, stainless steel with air releases  
 Water inlet, stainless steel  
 Water pump, 12V with filter  
 Water heater, 120V (21 GAL/80 L)  
 Dockside/shore water connection  
 Level indicator on IMIS

### Waste System

Black Water Waste System

- Water tank, stainless steel with odor filter, water level sensor, and air release
- Waste pump, electric
- Level indicator on IMIS
- Dockside pumpout fitting – stainless steel (starboard aft deck)
- Overboard waste discharge fitting

## OTHER ITEMS

Owner's manual and engine manual

## FACTORY OPTIONS

### Color & Materials

Cabinetry

- Gloss Dark Walnut
- OR
- Gloss Beachwood

Mediterranean Design Package

- Please ask Sales Consultant for additional information or refer to sales brochure

Interior Upholstery

- White (Walnut Cabinetry)
- OR
- White and Grey (Beachwood Grey Cabinetry)

### Comfort Pack

Stern thruster, electric  
 Electric grill in cockpit minibar (230V)  
 Ice maker in cockpit minibar  
 2x cablemaster  
 Cover for cockpit small sofa  
 Cover for cockpit sofa  
 Cover for sundeck on the bow  
 Covers for front window and side windows - black net structure  
 Raymarine Chartplotter/FF 2x Axiom XL 16 (2x main station) 1x Axiom 12 Pro-S (1x skydeck) with CP370 transducer B744V and Magnum Open Array 4kW 48"  
 Additional Raymarine Chartplotter 1x Axiom 12 RV on skydeck  
 Electric sliding TV LED HD 50" with Blu-ray player in salon  
 TV LED 43" in master cabin

### Luxury Pack

Beach Mode package - foldable aft balconies and sliding openable aft side windows, convertible bar area in side cockpit  
 Ice maker on skydeck  
 Refrigerator on skydeck (62 L)  
 Waterproof wood look floor in salon and galley  
 Carpets on floor in salon and galley  
 Washer and dryer (separate units)  
 Underwater LED lights (12)

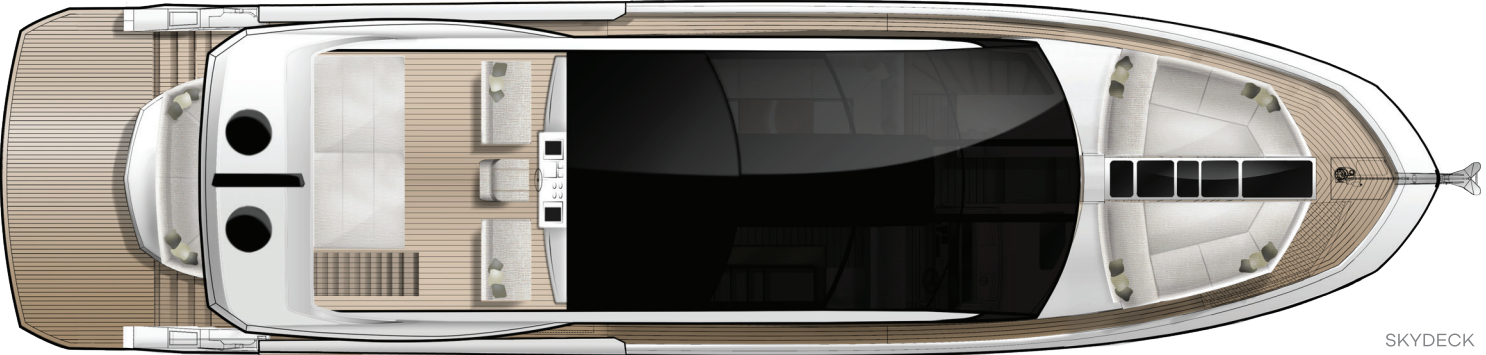
Rear view camera + engine compartment camera (2)  
 Large refrigerator in aft salon  
 Lighting, ambient LED in master  
 Soundbar system in salon  
 TV LED 43" in forward cabin  
 TV preparation w/o mechanism in third cabin  
 Fusion radio in bow cabin + Fusion bluetooth module  
 Satellite TV KVH TracVision HD7

### Individual Options

Gyro stabilizer (1x Seakeeper 9)  
 Dishwasher in galley  
 Drawer refrigerator in passage to the front deck  
 Electric sliding TV LED HD 50" in aft salon facing cockpit area  
 Additional exterior bar stools (2)  
 Wine cooler in salon  
 Big American grill in cockpit in place of small aft facing seat to be in black with refrigerator below  
 Anchor and chain (50 KG, 10/100 M), stainless steel  
 4-cabin layout  
 Fitted sheet set except crew cabin  
 Fitted sheet crew cabin, one bed



LAYOUT



SKYDECK



MAIN DECK



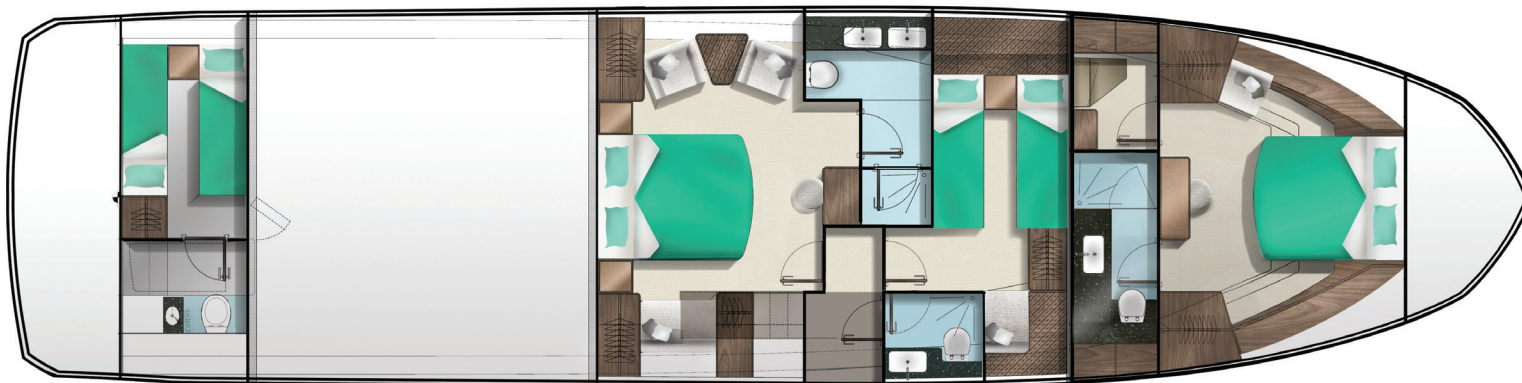
MAIN DECK OPEN

The right is reserved to make changes, without notice, at any time, in equipment, materials, and specifications. Drawings, photos, and renderings may show optional equipment.





## LAYOUT



LOWER DECK 3-Cabin



LOWER DECK 4-Cabin



