

01634



**propulsion**

TRIPLE MERCURY VERADOS

T-600 HP

cruising speed\* 40 MPH

maximum speed\* 55 MPH

length overall 44' 9" / 13.65 M

hull length 41' 2" / 12.55 M

beam 13' 6" / 4.15 M

beam (beach mode) 19' 5" / 5.91 M

dry weight 35,314 LB / 16,018 KG

maximum load weight 43,431 LB / 19,700 KG

draft 3' 9" / 1.18 M

transport height 10' 6" / 3.23 M

fuel capacity 528 GAL / 2,000 L

water capacity 79 GAL / 300 L

black water capacity 26 GAL / 100 L

grey water capacity 39 GAL / 150 L

The specification measurements are approximate and subject to variance.

\*The listed performance data is an estimate only based on vessel testing on fresh water with 6 people, full fuel and water and a clean hull bottom. The performance will change based on boating location, vessel loading and maintenance.





*Immerse yourself in a sleek and modern helm inspired by high-performance sports cars with a luxurious feel.*

*The forward cabin feels like that of a much larger Galeon yacht, plenty of natural light with best-in-class head.*



*Have more space to stretch out and enjoy hovering above the water in Beach Mode.*



The Galeon 435 GTO is the next-in-line of powerful outboard models with its sleek contours and versatile space distribution on board, bound to stand out in any marina. The silhouette is a clear evolution of the acclaimed 375 GTO with even more aggressive lines and eye-catching details fitted onto the two-tone exterior. The striking side profile features full-length hull windows and partially glazed balconies, while the wheelhouse has unobstructed, 360° views.



# STANDARD FEATURES

## EXTERIOR

### Exterior Upholstery

- Grey (Light and Dark)

### Hull & Deck Accessories

Cleats, stainless steel  
 Flooring, molded non-skid  
 Horn, electric  
 Lights, navigation  
 Mooring System
 

- Reversible electric anchor winch
- Anchor roller
- Galvanized anchor and chain
- Fiberglass deck hatch to self-draining chain locker

 Radar mast, stainless steel  
 Rubrail, PVC with stainless steel insert  
 Searchlight, remote controlled  
 Thru-hull fittings, stainless steel/bronze  
 Windshield, tempered glass

### Cockpit

A/C vents at helm  
 Door, cabin entrance – sliding and lockable, plexiglass  
 Handrails, 316 stainless steel  
 Hardtop, fiberglass  
 Helm station
 

- Console rail, stainless steel
- Compass
- Cupholders
- Helm seat, captain's chair with bolster, power adjustable
- Forced air vents above helm
- Outlets, USB
- Station instruments and controls
  - Digital gauges
  - Switches
  - Alarm, high water – bilge
  - Start keys, 3 position
  - Joystick piloting with SkyHook and autopilot
  - Trim tab control panel
  - Dual lever control, EVC
- Steering wheel, adjustable, exclusive Galeon
- Stereo remote control

Windscreen wiper with front window washing system  
 Lighting, indirect LED  
 Lighting, direct LED  
 Outlet, 120V GFI protected  
 Self-draining  
 Seating with table (fiberglass)  
 Speakers  
 Storage, side lockers  
 Wetbar with sink, electric grill, and trash bin  
 Refrigerator

### Stern

Cleats, stainless steel, retractable  
 Doors  
 Lighting, indirect LED  
 Shore power inlet, 120V/30A  
 Shore water connection

## INTERIOR

### Interior Color & Materials

Cabinetry
 

- Beachwood Grey

 Interior Upholstery
 

- Grey

### Cabin

Carbon monoxide detector  
 Door access to head with mirror  
 Lighting, overhead LED  
 Outlet with USB, 120V  
 Storage, wall cupboards  
 Waterproof wood look floor  
 Berth, polyurethane high resilience foam mattress and bed covers  
 Lighting, overhead LED  
 Outlets, 120V (adjacent to bed)

### Head

A/C vent  
 Bathroom accessories – toothbrush holder, towel hooks, soap dispenser, toilet paper holder  
 Cabinets, mirrored  
 Corian countertop with bowl and chrome faucet  
 Extractor fan  
 Flooring, molded non-slip

Lighting, overhead LED  
 Outlet, 120V GFI protected  
 Separate shower stall

## SYSTEMS

### Power & Drive Systems

Mercury Verado 2x 600 outboard engines
 

- Counter rotating
- Propellers (stainless steel)

 Hydraulic steering system  
 Trim tabs

### Bilge

Bilge pumps, automatic electric (2) – forward and aft  
 Bilge pumps, high water alarm  
 Common drain system

### Air Conditioning

Air conditioning with reverse cycle heating, Dometic MarineAir (12,000 BTU) with dual control for interior and helm

### Electrical Systems

DC Electrical System (12V)
 

- Batteries
- Battery charger
- Circuit breakers
- DC main switchboard

 AC Electrical System (120V)
 

- Shore power, 120V/30A
- AC main switchboard
- Generator, 6 kW/60 Hz diesel

### Fuel System

Fuel tank, vented  
 Fuel filters  
 Fuel lines  
 Fuel inlet  
 Fuel stop valve  
 Diesel fuel tank, vented  
 Diesel fuel filters, generator (1)  
 Diesel fuel lines  
 Diesel fuel inlet  
 Diesel fuel stop valve

### Fresh Water System

Water tank, stainless steel, vented  
 Water inlet, stainless steel  
 Water pump, automatic with filter  
 Dockside/shore water connection  
 Level indicator

### Waste System

Black Water Waste System
 

- Waste tank, stainless steel, with odor filter, water level sensor, and vented
- Waste pump, electric
- Level indicator and pump switch
- Dockside pumpout fitting – stainless steel
- Overboard waste discharge fitting

## OTHER ITEMS

Owner's manual and engine manual





## FACTORY OPTIONS

### Color & Materials

#### Cabinetry

- Gloss or Matte Walnut with matching floor
- OR
- Gloss or Matte Eucalyptus with matching floor

### Comfort Pack

#### Cablemaster

Covers for foredeck seating

Cover for aft seating

Raymarine Chartplotter/FF 1x Axiom 16 XL RV-US  
with transducer CP370 and digital radar  
Quantum Q24C 18"

Additional Raymarine Chartplotter 1x Axiom 16 XL

Raymarine VHF Ray91 AIS and VHF antenna

Sunshade awning in cockpit

### Luxury Pack

Refrigerator in galley portside lower deck

Microwave (230V)

Upgraded Fusion sound system, amplifiers (2)  
(speakers (8) + subwoofer/stereo remote (1))

Underwater LED lights (7/8)

Blue/White LED lights (cockpit, gate passage,  
lounge area)

TV LED 40" in front cabin

TV LED 32" in aft cabin

Chain counter display

### Individual Options

Seakeeper 5

Carbon aft sundeck package

Raymarine Cyclone 3 ft open array radar

Ice maker in cockpit

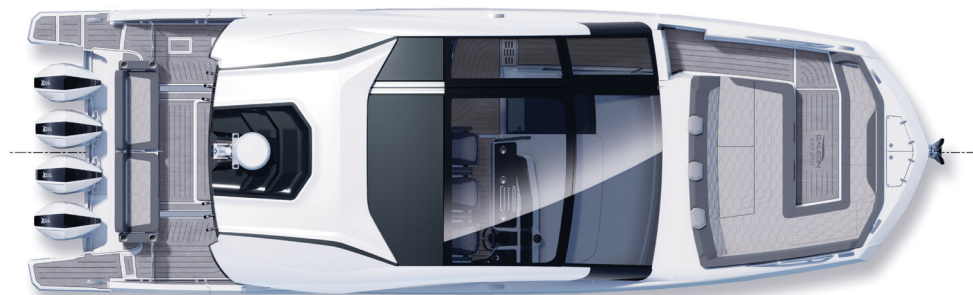
Electric tinted glass roof in salon

Electric tinted glass upper door in salon  
for side passage to bow

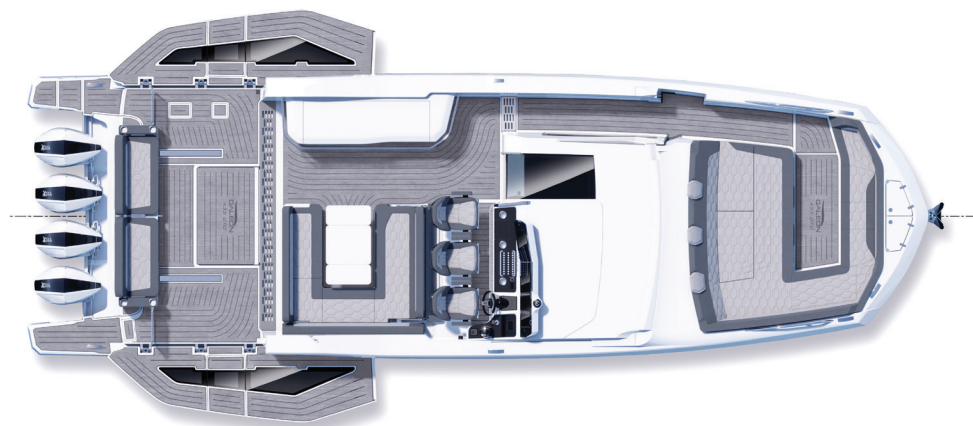
Electric openable side windows on both sides

Anchor and chain – stainless steel

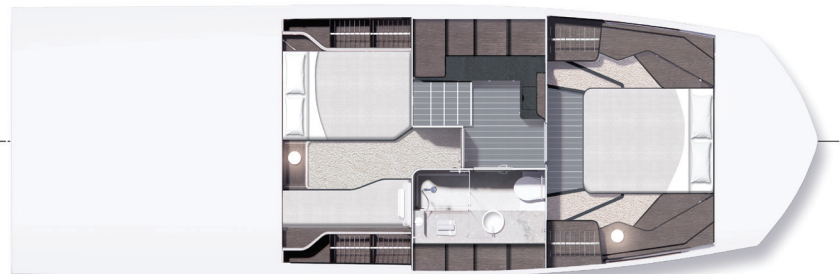
## LAYOUT



MAIN DECK



BEACH MODE



BELOW DECK

