

640

***propulsion***

TWIN VOLVO PENTA D13-1000  
(T-1000 HP - 745 KW)

<i>cruising speed*</i>	25 KNOTS
<i>maximum speed*</i>	29 KNOTS

*length overall* 68' 3" / 20.8 M

*hull length* 60' 5" / 18.42 M

*beam* 16' 5" / 5.0 M

*beam (balcony down)* 24' 3" / 8.1 M

*dry weight* 78,264 LB / 35,500 KG

*maximum load weight* 90,389 LB / 41,000 KG

*draft (maximum)* 4' 10" / 1.47 M

*height (including mast light)* 24' 9" / 7.54 M

*fuel capacity* 990 GAL / 3,750 L

*water capacity* 211 GAL / 800 L

*black water capacity* 55 GAL / 210 L

*The specification measurements are approximate and subject to variance.*

*\*The listed performance data is an estimate only based on vessel testing on fresh water with 6 people, full fuel and water and a clean hull bottom. The performance will change based on boating location, vessel loading and maintenance.*



*The aft galley on the main deck has an exceptional amount of counter space and storage, both of which should please the chef.*

**Note:** Layout and features may vary from shown here due to manufacturer consideration and client customization.

*A fully loaded foredeck lounge is the best spot on the yacht to entertain guests far away from prying eyes.*



*The level of fit and finish on the 640's accommodations level is unparalleled, and the storage spaces are both plentiful and creative.*



The Galeon 640 FLY transcends mere form and function with stunning contemporary design and expertly hand-crafted interiors. This transformer yacht is revolutionizing the segment with its innovative approach to layout. With powerful Volvo propulsion systems and advanced electronics and controls, the Galeon 640 FLY will deliver experiences that create lifelong memories of times spent with family and friends. All with a style that will make its owner the envy of any port-of-call.



# STANDARD FEATURES

## EXTERIOR

### Exterior Upholstery

- Tan & Mocha
- OR
- White & Mocha
- OR
- White & Silver

### Hull & Deck Accessories

Bottom paint  
Bow deck rail, 316 stainless steel with side access  
Cleats, 16" stainless steel (8)  
Fiberglass engine room air intakes and stainless steel outputs  
Flooring, molded non-skid (bow and side deck)  
Fusion radio RA205 with speakers (2) on bow  
Handrails, 316 stainless steel (cockpit and side deck)  
Horn, electric  
Lights, navigation  
Mooring System

- Electric anchor winch with helm station and foot switches
- Anchor roller
- Galvanized anchor with galvanized chain
- Lockable, fiberglass deck hatch to self-draining chain locker

Rubrail, PVC with stainless steel insert  
Ship's bell  
Spotlight, remote-controlled  
Skylight, foredeck with opening rectangular hatch  
Seating, foredeck  
Sunpad, foredeck  
Tables cockpit, foredeck  
Thru-hull fittings, stainless steel  
Windows, bonded tempered glass (hullside) with integrated polycarbonate opening portholes  
Windshield, bonded tempered and tinted glass  
Windshield defroster  
Flybridge, extended

### Cockpit

Door, salon entrance – three segment, stainless steel and glass, folding and lockable with flush threshold  
Handrails, 316 stainless steel  
Hatch, engine room access

Lighting, indirect LED (cockpit and stairs)  
Lighting, overhead LED  
Seat, dual, aft facing  
Self-draining  
Sofa, C-shaped upholstered with aft sunpad  
Cupholders  
Speakers (2)  
Stairs, access to flybridge (molded fiberglass with teak treads and stainless steel handrail)  
Storage, side lockers  
Table  
Teak, cockpit sole

### Stern

Cleats, stainless steel (2)  
Crew cabin

- A/C
- Bed, two singles
- Door, transom with stairs
- Lighting, overhead LED
- Outlet, 120V
- Portlight
- Storage, cabinetry
- Wardrobe with stainless steel rod and shelving
- Crew head
- Shower
- Sink with faucet
- Toilet with electric pump and macerator

Door, cockpit access (stainless steel and acrylic)  
Lighting, indirect LED  
Shore power inlets, 240V  
Shower, fresh water (hot and cold)  
Stairs, access to cockpit (molded, starboard)  
Storage, side lockers  
Swim platform, hydraulic with connecting stairway, adjustable chocks, collapsible three-step stainless steel swim ladder, and teak decking

### Flybridge

Flooring, molded non-skid  
Self-draining  
Handrails, 316 stainless steel  
Helm station

- Compass
- Cupholders
- Helm seat, doublewide
- Outlets, USB

- Station instruments and controls
  - Engine data display
  - Switches
  - Thruster control panel
  - Fire system monitor
  - Engine ignition panel
  - Trim tab control panel
  - Dual lever control, EVC
- Steering wheel, exclusive Galeon
- Stereo, Fusion 12V AM/FM with bluetooth module and speakers (2)

Fiberglass arch with stainless steel radar mast  
Hatch, flybridge access  
Light, anchor  
Lighting, indirect LED  
Outlet, 120V GFI protected  
Seating, doublewide sofa adjacent to captain's seat  
Seating, U-shape upholstered  
Sunpad, forward  
Table, foldable fiberglass  
Venturi wind deflector, plexiglass with 316 stainless steel rails  
Wetbar with:

- Fiberglass sink and retractable faucet
- Refrigerator (2.2 ft³/62 L)
- Storage

Blinds, salon entrance door  
Lighting, overhead LED with wood detailing  
Outlet, 120V  
Seating, C-shape sofa with hi-lo wood table with storage below  
Side windows, panoramic with window treatments  
Storage, cabinets  
Wetbar, sink and storage forward  
Bow access through windshield

### Galley

Cooktop, 240V two-burner induction  
Corian worktop with Corian shelf  
Extractor fan, overhead  
Lighting, accent LED  
Lighting, overhead LED with wood detailing  
Microwave  
Outlets, 120V GFI protected  
Refrigerator, under counter with freezer compartment (5.8 ft³/165 L)  
Side windows, panoramic with window treatments  
Storage, cabinets and overhead cupboards  
Storage, dedicated glass storage  
Twin stainless steel sinks with faucet and wood cutting board  
Breakfast bar, starboard  
Waterproof wood look floor

### Helm Station (main, lower)

A/C vents  
Compass  
Cupholders  
Outlets, USB  
Station instruments and controls

- Volvo 7" digital Electronic Vessel Control (EVC) panel
- Switches
- Fire system monitor
- Engine start panel
- Trim tab control panel
- Dual lever control, EVC
- Rudder indicator
- Alarm, high water – bilge (2), cabin

Seat, dual captain's seats with armrests  
Steering wheel, exclusive Galeon  
Synchronized twin windscreen wipers with front window washing system and defroster outlets

## INTERIOR

### Interior Color & Materials

Cabinetry

- Dark Walnut Matte
- OR
- Beachwood Matte

Interior Upholstery

- White
- OR
- Beige

Window Treatments

- Roman shades

### Salon/Dinette

Carbon monoxide detector  
Flooring, carpet  
Corridor stairs, dual with indirect LED spot lights



## STANDARD FEATURES

### *Master Cabin (full beam, amidship)*

Carbon monoxide detector  
 Door, private access to owner's head and shower with full length mirror  
 Bed, queen-size, centerline with polyurethane high resilience foam mattress, bed cover and storage below  
 Flooring, carpet  
 Headboard, decorative with adjacent reading lamps  
 Lighting, accent LED  
 Lighting, overhead LED  
 Lighting, skylight LED  
 Nightstands with storage, port and starboard  
 Outlets, 120V  
 Side windows, panoramic with window treatments  
 Seating, port side twin seat with storage between  
 Sound system, Bose® SoundTouch® 120 with soundbar and Acoustimass® module  
 Storage, cabinet  
 TV LED 32" with Blu-ray player  
 Vanity with stool  
 Wardrobe, port and starboard

### *Master Head & Shower*

A/C vent  
 Bathroom accessories – toothbrush holder, towel hooks, soap dispenser, toilet paper holder  
 Cabinets, mirrored  
 Corian countertop with ceramic bowl and chrome faucet  
 Extractor fan  
 Flooring, molded fiberglass non-slip  
 Lighting, overhead LED  
 Outlet, 120V GFI protected  
 Porthole, opening tinted with mosquito net  
 Storage, cabinets and shelving  
 Toilet with electric pump and macerator  
 Separate shower area with hinged plexiglass door
 

- Corian panel
- Chrome shower system with overhead rain shower
- Floor drain
- Shower tile mosaic

### *Forward Guest Cabin*

Carbon monoxide detector  
 Door, private access to guest head and shower with full length mirror

Bed, queen-size, centerline with polyurethane high resilience foam mattress, bed cover and drawer storage below  
 Flooring, carpet  
 Headboard, decorative with adjacent reading lamps  
 Lighting, accent LED  
 Lighting, overhead LED  
 Outlets, 120V  
 Portholes, opening tinted inserts in main windows (port and starboard) with mosquito nets  
 Side windows with window treatments  
 Skylight, foredeck with opening rectangular hatch and manual blinds  
 Storage, overhead and adjacent cabinets (port and starboard)  
 Stairs, private entrance  
 Vanity with stool  
 Wardrobe with lighted stainless steel rod

### *Forward Head & Shower*

A/C vent  
 Bathroom accessories – toothbrush holder, towel hooks, soap dispenser, toilet paper holder  
 Cabinet, mirrored  
 Corian countertop with ceramic bowl and chrome faucet  
 Extractor fan  
 Flooring, molded fiberglass non-slip  
 Lighting, overhead LED  
 Outlet, 120V GFI protected  
 Porthole, opening tinted with mosquito net  
 Storage, cabinet  
 Toilet with electric pump and macerator  
 Separate shower area with hinged plexiglass door
 

- Corian panel
- Chrome shower system with overhead rain shower
- Floor drain
- Shower tile mosaic

### *Mid Guest Cabin (3-cabin layout)*

Carbon monoxide detector  
 Beds, convertible twin with polyurethane high resilience foam mattress, bed covers, and storage below (filler to form double bed)  
 Flooring, carpet  
 Lighting, overhead LED  
 Lighting, reading lamps (2)

Outlet, 120V  
 Nightstand with storage drawer  
 Porthole, opening tinted insert in main window with mosquito net  
 Side windows with window treatments  
 Storage, overhead cabinets  
 Wardrobes with lighted stainless steel rod

### *Port & Starboard Guest Stateroom (4-cabin layout)*

Carbon monoxide detector  
 Door, private access to guest head and shower with full length mirror  
 Bed, twin, with polyurethane high resilience foam mattress, bed cover and storage below  
 Flooring, carpet  
 Lighting, overhead LED  
 Nightstand with storage drawer and reading lamp  
 Outlet, 120V  
 Porthole, opening tinted inserts in main window with mosquito nets  
 Side windows with window treatments  
 Storage, overhead cabinets  
 Wardrobe with lighted stainless steel rod

### *Guest Head & Shower*

A/C vent  
 Bathroom accessories – toothbrush holder, towel hooks, soap dispenser, toilet paper holder  
 Cabinets, mirrored  
 Corian countertop with ceramic bowl and chrome faucet  
 Extractor fan  
 Flooring, molded fiberglass non-slip  
 Lighting, overhead LED  
 Outlet, 120V GFI protected  
 Porthole, opening tinted with mosquito net  
 Storage, cabinet  
 Toilet with electric pump and macerator  
 Separate shower area with hinged plexiglass door
 

- Cabinet, mirrored
- Corian panel
- Chrome shower system
- Floor drain

### *Crew Cabin*

Beds, (2) twin  
 Refrigerator  
 Microwave

Storage  
 Head with shower and sink  
 Engine room access  
 Lighting, LED  
 Window for natural light

## SYSTEMS

### *Power & Drive Systems*

2x Volvo Penta D13-1000 (2x 1000 HP/745 kW) diesel engines
 

- Straight shaft transmission
- Propellers and rudder (bronze)
- Propeller shafts (stainless steel)
- Electronic Vessel Control System
- Exhaust, underwater

 Bow thruster, electric  
 Hydraulic steering system  
 Trim tabs interceptors with indicators

### *Bilge*

Automatic/manual fire extinguishing system  
 Bilge pumps, automatic electric (3)  
 Bilge pumps, high water alarm  
 Common drain system  
 Extractor fans (2)  
 Ladder, stainless steel  
 Lighting, LED  
 Sound insulation

### *Air Conditioning*

Air Conditioning System, Condaria Chilled water (108,000 BTU) – 240V

### *Electrical Systems*

DC Electrical System (24V)
 

- Batteries, engine starting
- Batteries, service
- Battery, bow thruster
- Battery charger/converter, 120V/12V
- Circuit breakers
- Integrated Management Information System (IMIS), Raymarine
- Digital switching system, EmpireBus

 AC Electrical System (240V)
 

- Shore power, 240V/50A with 50 ft. cords
- Circuit breakers



## STANDARD FEATURES

- AC main control panel
- Generator, Onan 29 kW diesel with sound shield (120/240V)
- Zincs

### Electronics

Raymarine VHF radio with Automatic Identification System (AIS) receiver, remote speaker, repeater, and antenna  
Raymarine Autopilot with control units at main and flybridge helm stations

### Fuel System

Fuel tanks (2), 316 stainless steel with air releases  
Fuel filters, (2) engines, (1) generator  
Fuel lines, USCG – Type A-1  
Fuel inlet, port and starboard aft deck  
Fuel stop valve, electromagnetic  
Fuel transfer system, manual valve

### Fresh Water System

Water tank, stainless steel with air releases  
Water inlet, stainless steel  
Water pump, 12V with filter  
Water heater, 120V (21 GAL/80 L)  
Dockside/shore water connection  
Level indicator on IMIS

### Waste System

Black Water Waste System

- Water tank, stainless steel with odor filter, water level sensor, and air release
- Waste pump, electric
- Level indicator on IMIS
- Dockside pumpout fitting – stainless steel (starboard aft deck)
- Overboard waste discharge fitting

## OTHER ITEMS

Owner's manual and engine manual

## FACTORY OPTIONS

### Color & Materials

Cabinetry

- Gloss Dark Walnut
- OR
- Gloss Beachwood

Mediterranean Design Package

- Please ask Sales Consultant for additional information or refer to sales brochure

Interior Upholstery

- White (Walnut Cabinetry)
- OR
- White and Grey (Beachwood Grey Cabinetry)

### Comfort Pack

Aft dinner mode package – extended aft cockpit and aft flybridge (not available for skybridge) with enlarged sofas and tables + aft sunshade + aft storage access

Laminated hardtop on flybridge with electric soft roof

Stern thruster, electric

2x cablemaster

Cover for seats near flybridge steering console

Cover for flybridge steering console

Cover for aft sofa on flybridge

Cover for sunbed of flybridge

Cover for sofa in cockpit

Cover for sundeck on the bow

Cover for small sofa in cockpit

Covers for front window and side windows - black net structure

Raymarine Chartplotter/FF 2x Axiom XL 16 (2x main station) 1x Axiom 12 Pro-S (1x flybridge) with CP370 transducer B744V and Magnum Open Array 4kW 48"

Additional Raymarine Chartplotter 1x Axiom 12 RV on flybridge

Electric sliding TV LED HD 50" with Blu-ray player in salon

TV LED 43" in master cabin

### Luxury Pack

Beach Mode package - foldable aft balconies and sliding openable aft side windows, convertible bar area in side cockpit

Waterproof wood look floor in salon and galley

Carpets on floor in salon and galley

Electric grill on flybridge and minibar (230V)

Ice maker in flybridge minibar

Washer and dryer (separate units)

Underwater LED lights (12)

Rear view camera + engine compartment camera (2)

Large refrigerator in aft salon

Lighting, ambient LED in master

Satellite TV KVH TracVision HD7

Soundbar system in salon

Soundbar system in aft cabin

TV LED 40" in forward cabin

TV preparation w/o mechanism in third cabin

Fusion radio in bow cabin + Fusion bluetooth module

### Individual Options

Gyro stabilizer (1x Seakeeper 9)

Dishwasher in galley

Drawer refrigerator in passage to the front deck

Electric sliding TV LED HD 50" in aft salon facing cockpit area

Additional exterior bar stools (2)

Wine cooler in salon

Big American grill in cockpit in place of small aft facing seat to be in black with refrigerator below

Anchor and chain (50 KG, 10/100 M), stainless steel

Electric sunshade for aft flybridge lounge

Teak on flybridge

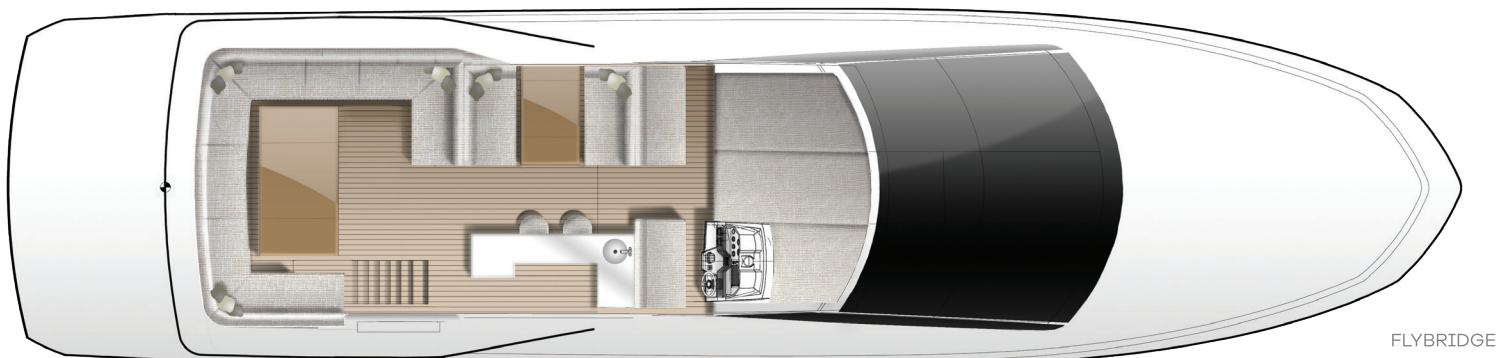
4-cabin layout

Fitted sheet set except crew cabin

Fitted sheet crew cabin, one bed



# LAYOUT



FLYBRIDGE



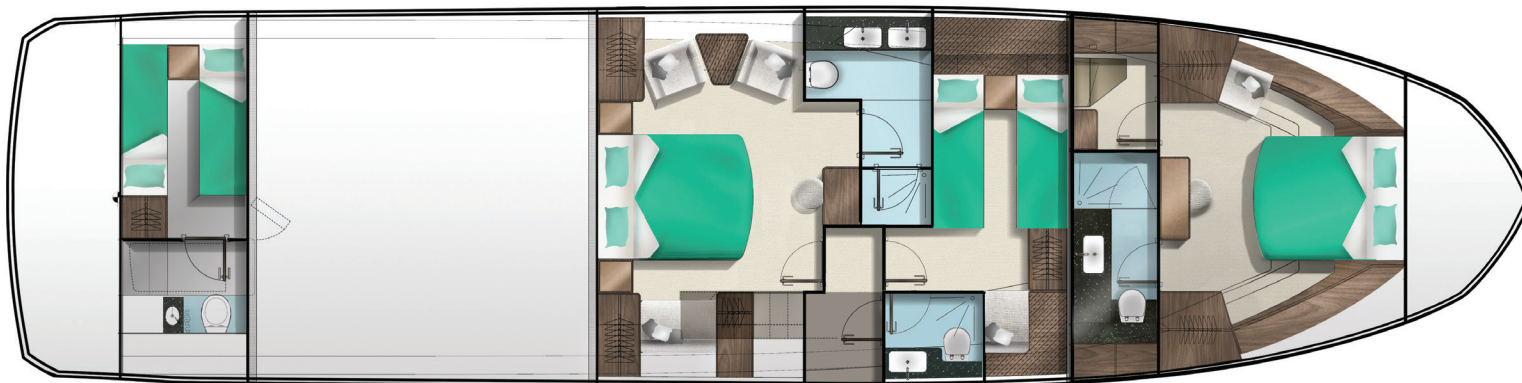
MAIN DECK



MAIN DECK OPEN



# LAYOUT



LOWER DECK



LOWER DECK Four Cabin

